

IF...

THEN CONTACT...

YOU WANT TO HELP PEOPLE EXPERIENCING HOMELESSNESS AND CONNECT THEM TO SHELTER OR OTHER SERVICES.



HOMELESS OUTREACH DIRECTOR

TINA LEWIS

TINA.LEWIS@USW.SALVATIONARMY.ORG

CALL OR TEXT

MARTRELL

253-754-2307

RICHARD

206-639-4048

YOU WANT TO HELP SOMEONE WHO MIGHT NEED SUPPORT FOR DRUG ADDICTION OR MENTAL ILLNESS.



MAKE A DIRECT REFERRAL

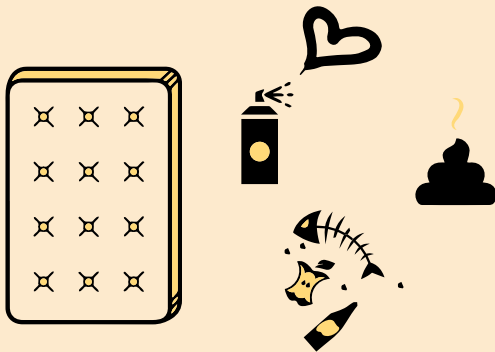
LEADKINGCOUNTY.MICROSOFTCRMPORTALS.COM /REFERSOMEONE/

CONTACT SOMEONE TO MAKE A REFFERAL

LEADREFERRALS@WEAREPDA.ORG

OR TEXT: 206-475-1629

YOU SEE GRAFFITI, LARGE OBJECTS, HUMAN WASTE, SYRINGES, OR GARBAGE DUMPED IN A PUBLIC SPACE OR IN THE PUBLIC RIGHT-OF-WAY



DOWNLOAD THE "FIND IT, FIX IT" APP IN THE APP STORE OR GOOGLE PLAY

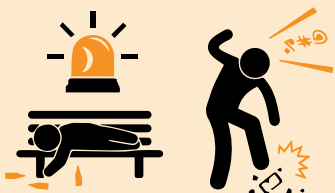


OR CALL

206-684-CITY (2489)

EMERGENCY? YES

IT'S AN EMERGENCY - SOMEONE ACTING VIOLENT/THREATENING OR IS UNRESPONSIVE



9-1-1

PLEASE ONLY USE IF THE MATTER IS URGENT AND IF PEOPLE'S LIVES OR HEALTH IS THREATENED

EMERGENCY? NO

IT'S NOT AN EMERGENCY I.E. A NON LIFE-THREATENING MEDICAL EVENT OR TO REPORT TRESPASSING INCIDENT



206-625-5011

EAST PRECINCT/ SPD NON-EMERGENCY LINE

YOU WANT TO REACH SOMEONE AT CHBA DIRECTLY

**CONTACT LAURA
LAURAC@THEGSBA.ORG**