



# CAPITOL HILL SAFETY RESOURCES

**IF...**

**THEN CONTACT...**

UPDATED MAR 2025

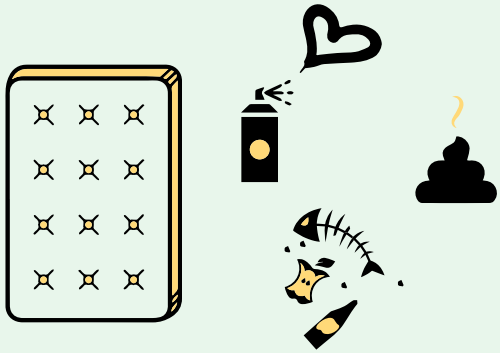
YOU WANT TO HELP SOMEONE WHO MIGHT NEED SUPPORT FOR DRUG ADDICTION OR MENTAL ILLNESS.



MAKE A DIRECT REFERRAL  
[LEADKINGCOUNTY.MICROSOFTCRMPORTALS.COM/REFER SOMEONE/](https://leadkingcounty.microsoftcrmportals.com/refer someone/)

CONTACT SOMEONE TO MAKE A REFFERAL  
[LEADREFERRALS@WEAREPDA.ORG](mailto:LEADREFERRALS@WEAREPDA.ORG)  
OR TEXT: 206-475-1629

YOU SEE GRAFFITI, LARGE OBJECTS, HUMAN WASTE, SYRINGES, OR GARBAGE DUMPED IN A PUBLIC SPACE OR IN THE PUBLIC RIGHT-OF-WAY



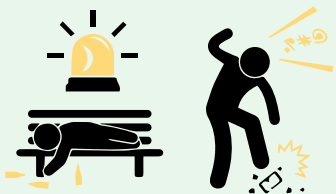
DOWNLOAD THE "FIND IT, FIX IT" APP IN THE APP STORE OR GOOGLE PLAY



OR CALL  
206-684-CITY (2489)

## EMERGENCY? YES

IT'S AN EMERGENCY - SOMEONE ACTING VIOLENT/THREATENING OR IS UNRESPONSIVE



# 9-1-1

PLEASE ONLY USE IF THE MATTER IS URGENT AND IF PEOPLE'S LIVES OR HEALTH IS THREATENED

## EMERGENCY? NO

IT'S NOT AN EMERGENCY I.E. A NON LIFE-THREATENING MEDICAL EVENT OR TO REPORT TRESPASSING INCIDENT



# 206-625-5011

EAST PRECINCT/ SPD NON-EMERGENCY LINE

YOU WANT TO REACH SOMEONE AT GSBA DIRECTLY

CONTACT LAURA  
[JENC@THEGSBA.ORG](mailto:JENC@THEGSBA.ORG)

YOU MAY ALSO CONTACT YOUR D3 COUNCIL MEMBER:  
JOY HOLLINGSWORTH, WITH ANY ISSUES AFFECTING YOUR NEIGHBORHOOD.

# D3HELP@SEATTLE.GOV